

HAND POLISH DISC

手研磨盤

PART NO. :



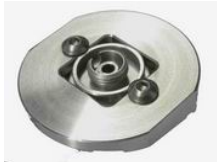
S-PC



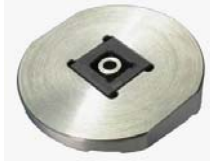
S-MULC



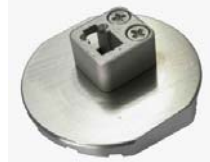
S-MTRJ



S-FC / S-AFC



S-ASC



S-LC / S-ALC

Feature

- One connector can be placed for polishing individually.
- It is cost effective.
- Slightly holding disc without tighten tooling, save timing during polishing.
- It is matched by related polish material, place it directly during operation.

Specification

Suitable style	φ2.5 mm / φ1.25 mm / MTRJ
Function	Single Ferrule Polish .
Suitable style	FC/PC/APC , SC/APC , LC/PC/APC
Function	Single Connector Polish .
Connector head	1 Position
Angle	8 ° For APC
Weight	< 140 g



Rear Side of Hand Polish Disc

Order

S-PC	polishing φ 2.5mm ferrule.
S-MULC	polishing φ 1.25mm ferrule.
S-MTRJ	polishing MTRJ ferrule.
S-FC	polishing FC/PC connector.
S-AFC	polishing FC/APC connector.
S-ASC	polishing SC/APC connector.
S-LC	polishing LC/PC connector.
S-ALC	polishing LC/APC connector.